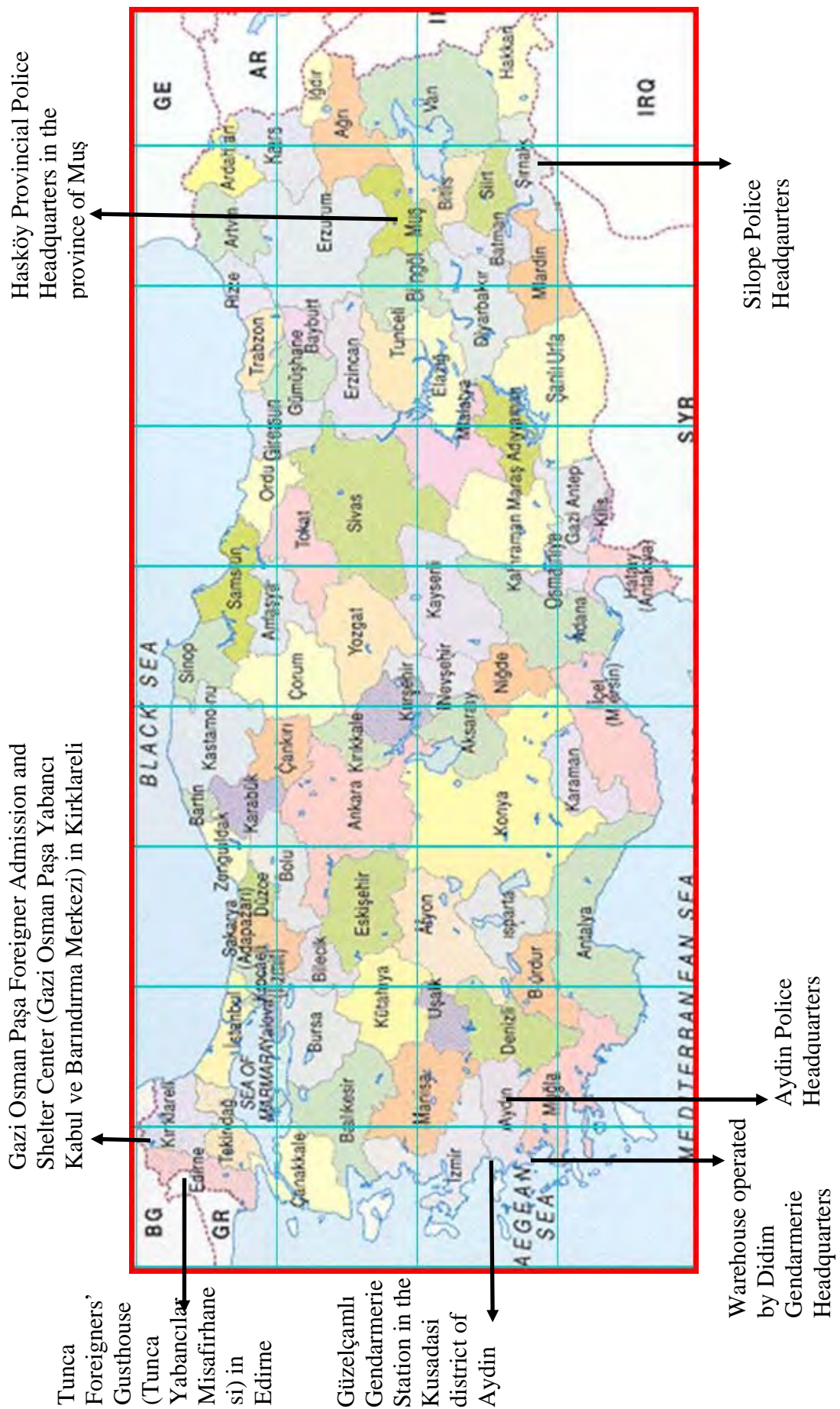
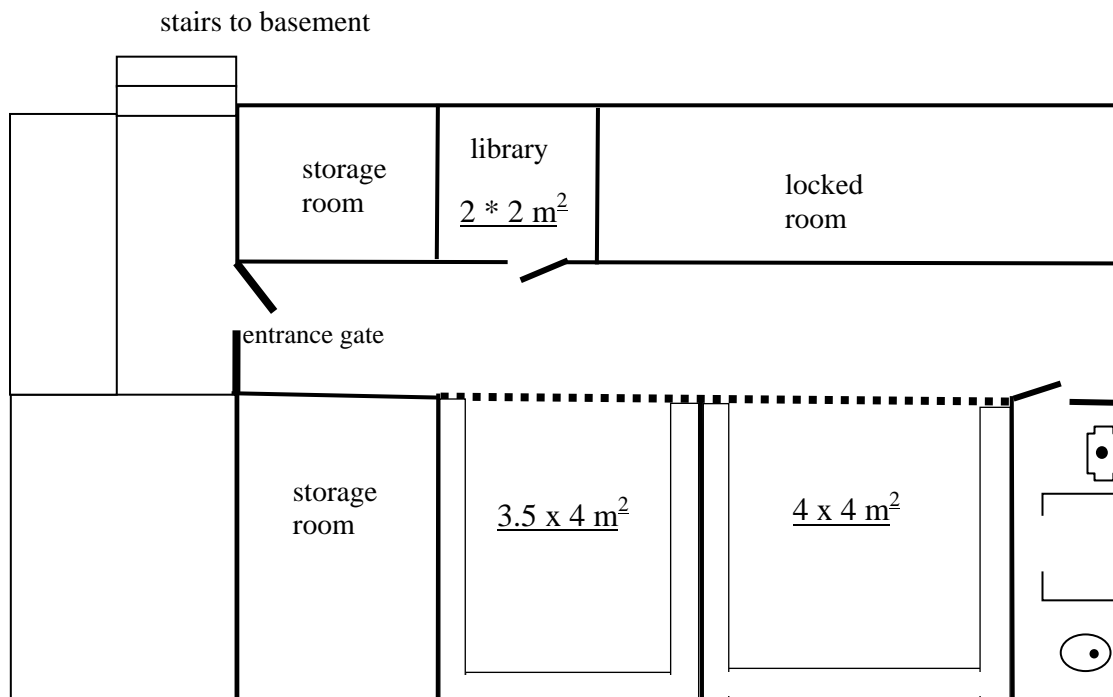


Attachment A – Map showing the seven detention centers

Attachment B - Detention facility in basement of Police Headquarters in Silopi/Şırnak, January 2008, approximate floor-plan

bathroom in poor state cleanliness

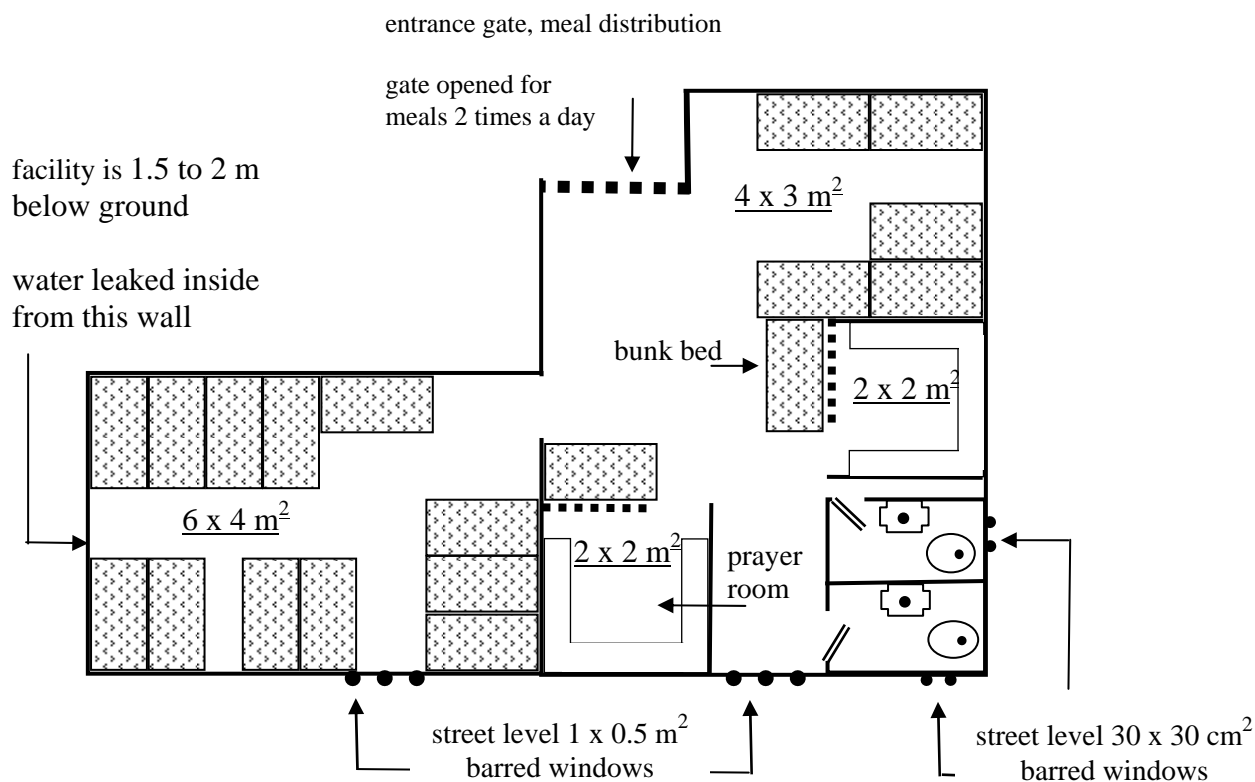
hot water: none during 1st week, faulty heating element thereafter.

bedding: only blankets in dirty and worn out conditions.

heating: none during 1st week, thereafter one electric heater.

natural lighting & ventilation: none.

Attachment C - Detention facility in basement of Provincial Police Headquarters in Hasköy/Muş, third quarter of 2008, approximate floor-plan



showers: none

toilets: 2 but 1 functional,

sinks: 2 but 1 functional.

hot water: none for six weeks, heating element thereafter.

bedding:

38 beds with mattresses & blankets in dirty and worn out conditions.

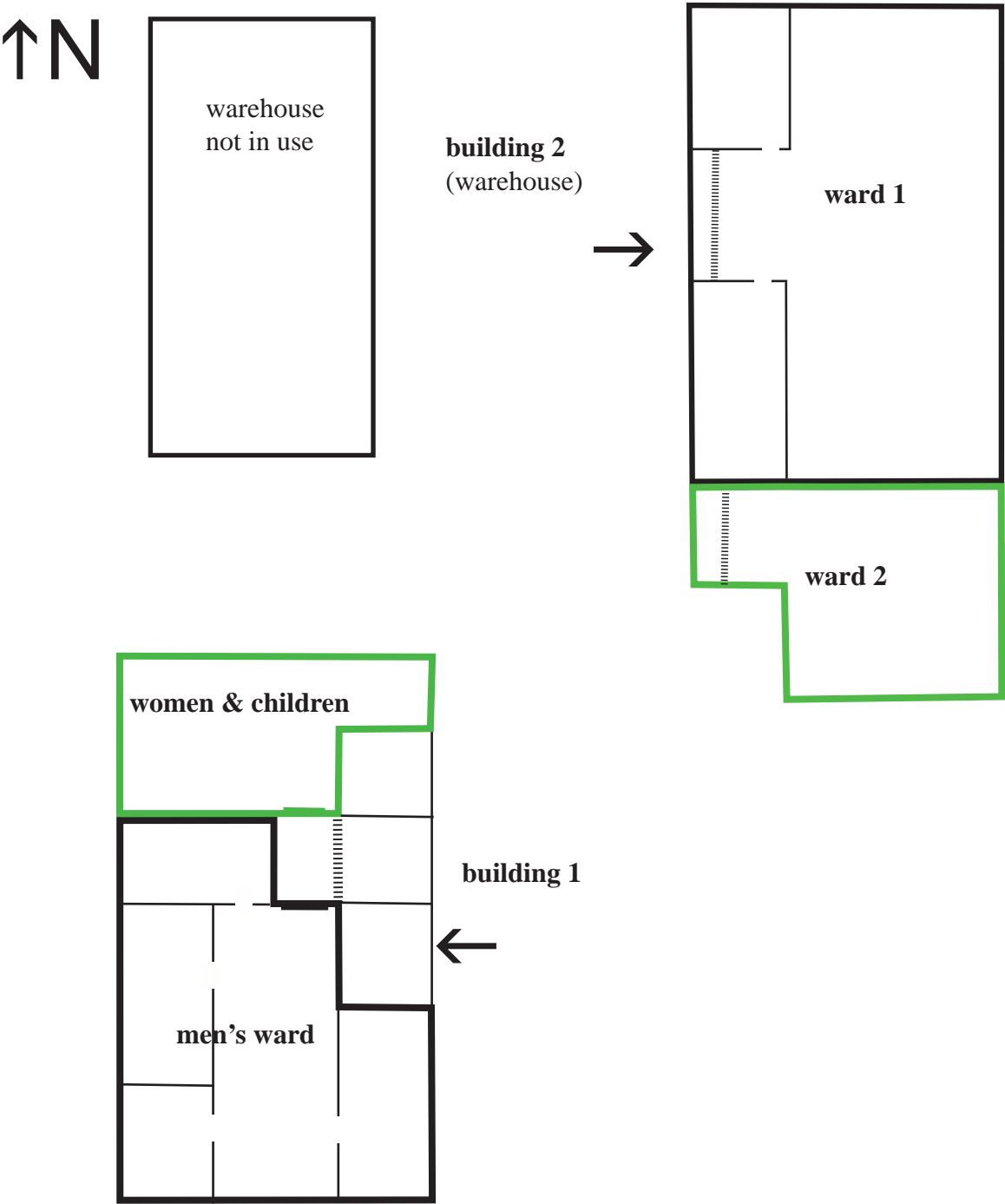
natural light & ventilation; very poor

heating: none

measurements: 72 m² total

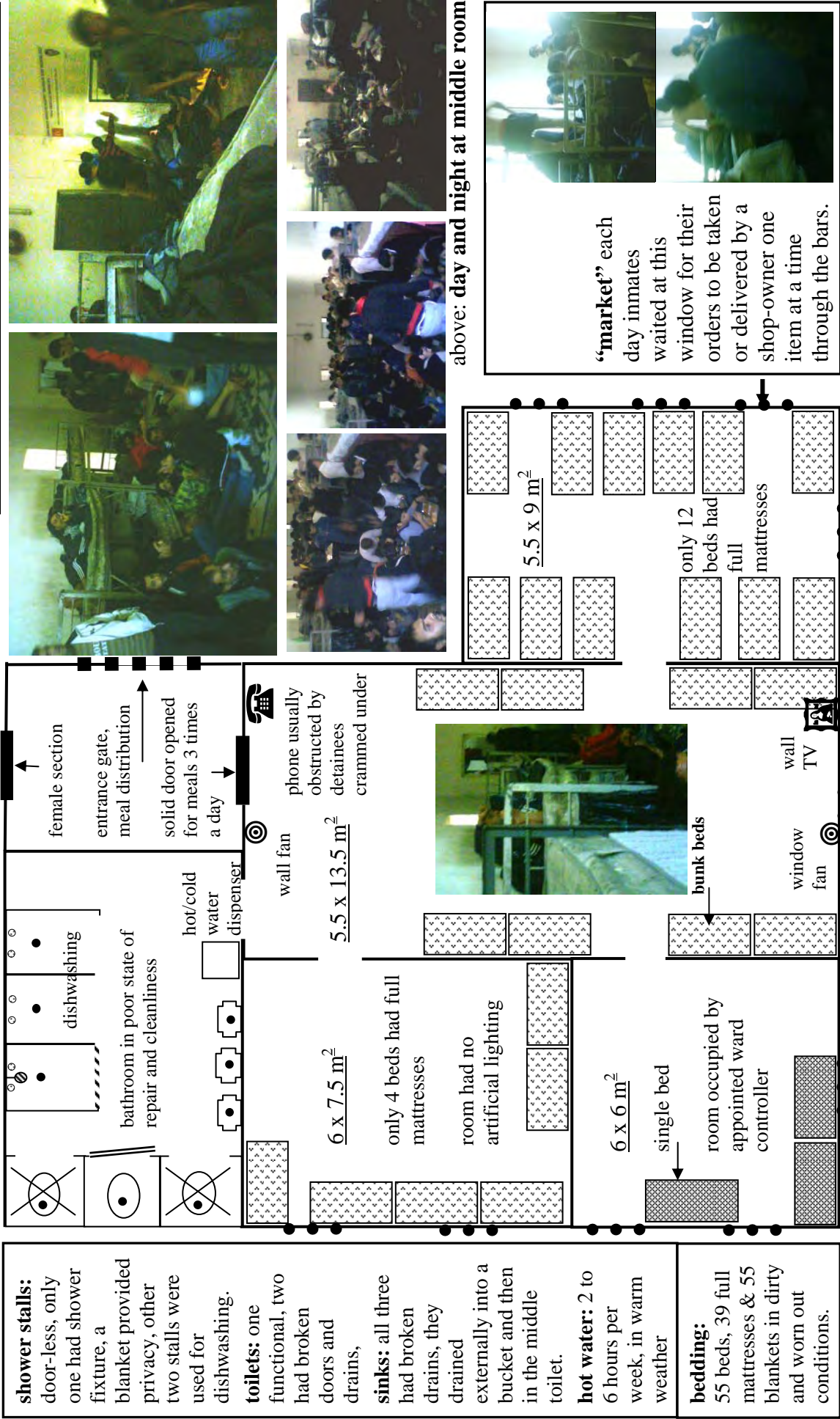
no. of occupants: 2 to 85 persons

Attachment D - EDIRNE TUNCA foreigners’ detention center, Building 1 & Building 2, approximate map



Attachment E – Edirne Tunca detention facility, Building 1, Men's Ward, second half of 2008, approximate floor-plan

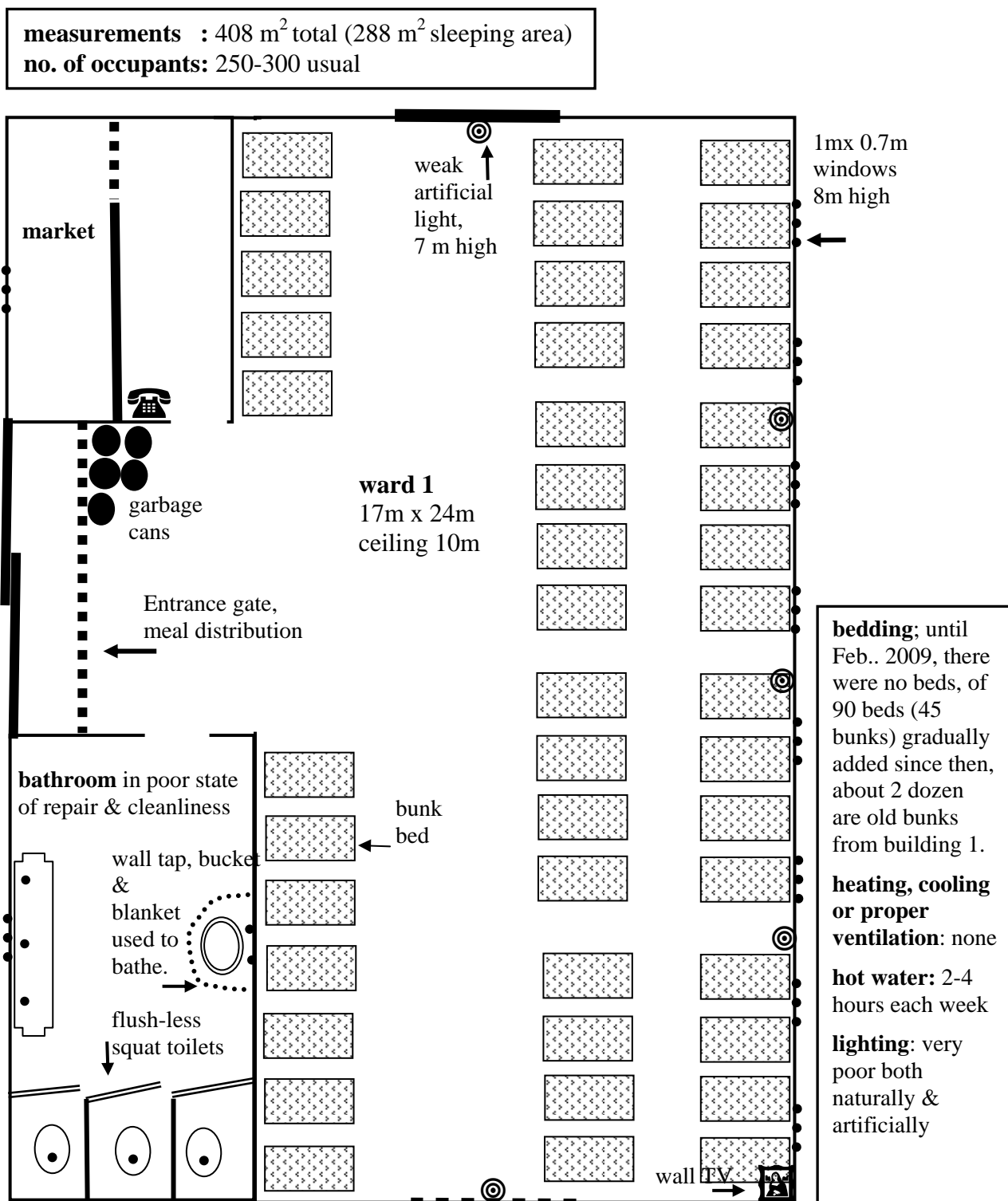
measurements: 233 m² total (169 m² sleep area)
no. of occupants: 120-150 usual



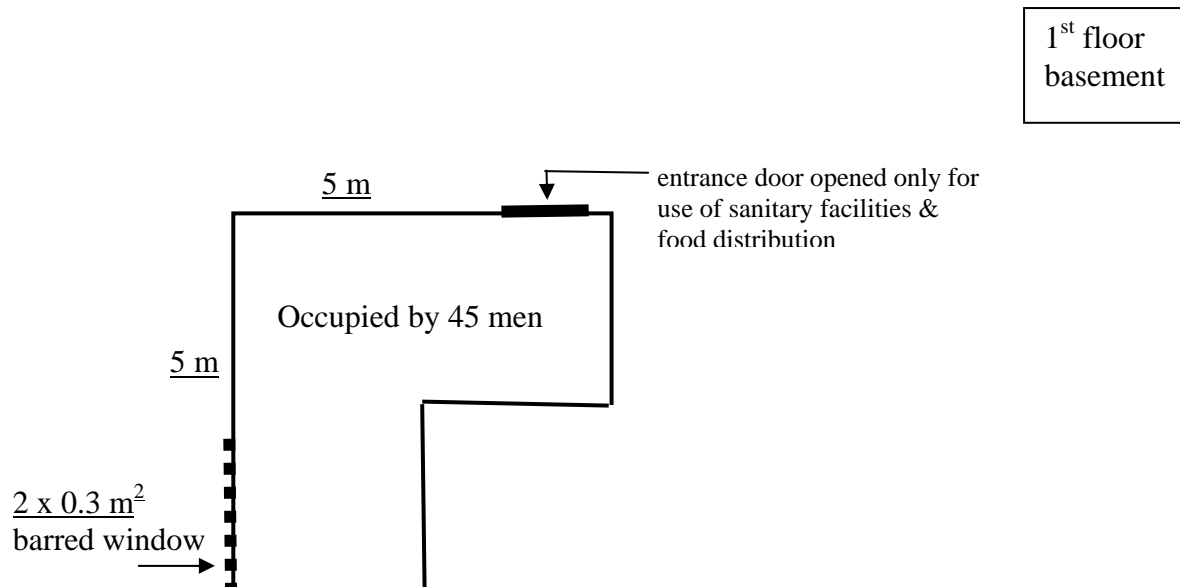
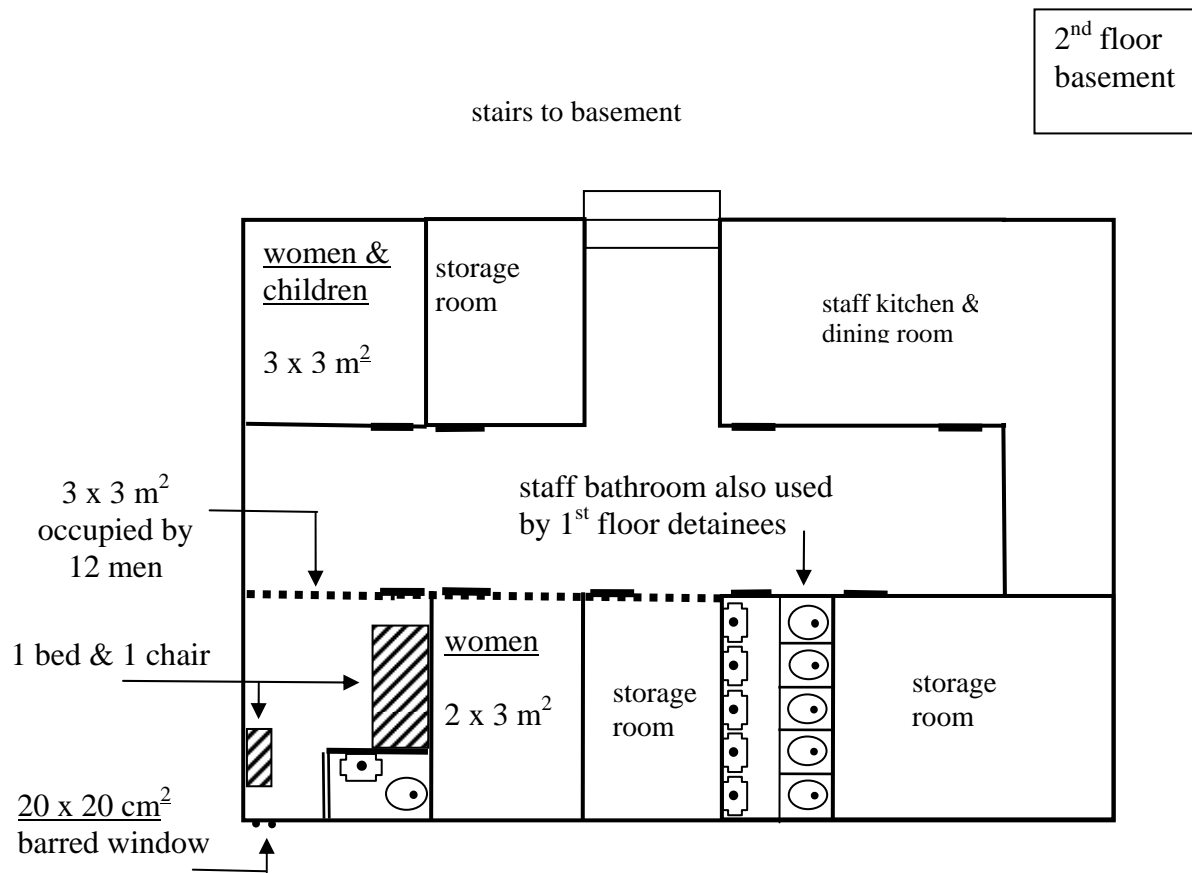
above: day and night at middle room

“market” each day inmates waited at this window for their orders to be taken or delivered by a shop-owner one item at a time through the bars.

Attachment F – Edirne Tunca detention facility, Building 2, Ward 1, first half of 2009, approximate floor-plan






Attachment G - Attachment G- Detention facilities in basements of Gendarmerie Station in Güzelçamlı/Aydın, September 2008, approximate floor-plan



Attachment H – Kırklareli GOP: meal menu (21-26 May 09)

photos provided by detainees

	Breakfast	Lunch	dinner
21 May 2009	bread (stale), jelly	bread(s), bulgur, cold soup	bread(s), rice, lentils
22 May 2009	bread (stale)	bread(s), plain pasta, red beans, diluted milk	bread(s), carrots, string beans & potato, dil. milk
23 May 2009	bread (½ loaf), jelly (20 gr) 	bread (½ loaf), bulgur (1 cup), lentils (1 c), rice soup (½ c) 	bread (½ loaf), bulgur (1 c), string beans & eggplant (1 c), rice soup (½ c) 
calories (calculated from calorieking.com) Total=1598	230+50=280	230+151+230+102=713	230+151+122+102=605
24 May 2009	bread	bread, bulgur, white beans, pasta soup	bread, bulgur, string beans & eggplant, pasta soup
25 May 2009	bread	bread, bulgur, red beans, diluted milk	bread, potatoes, soft drink (200cc), diluted milk
26 May 2009	bread	bread, plain pasta, lentils, diluted milk	bread, bulgur, beans, diluted milk



Attachment I – Kırklareli GOP: food distribution, dish washing & kitchen
photos provided by detainees



Attachment J – Kırklareli GOP: inflated grocery prices (May 2009)
provided by detainees

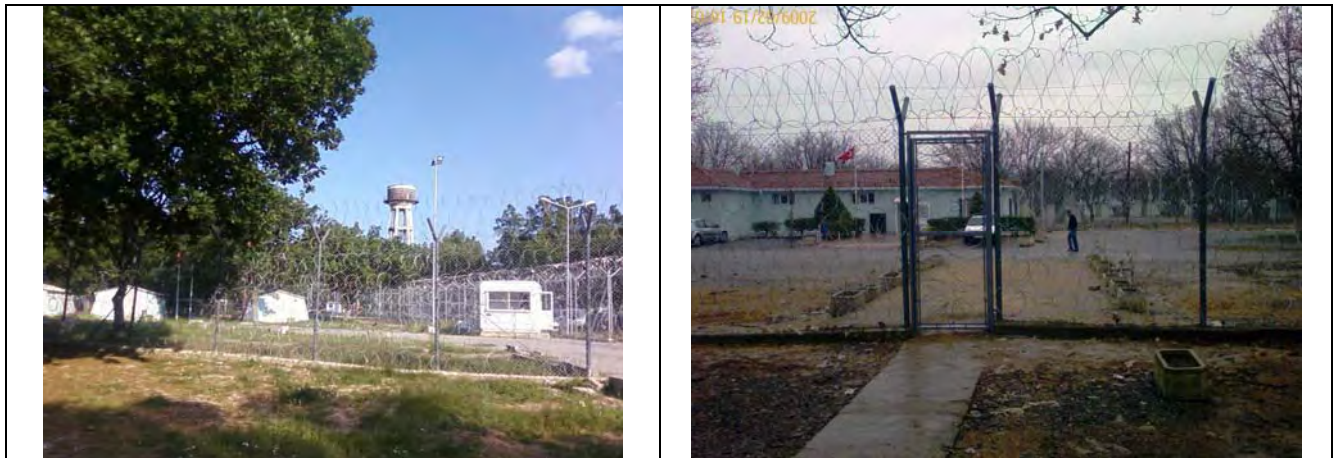
item (in TL)	GOP canteen	outside		item	GOP canteen	outside
yogurt	2	1.25		potatoes	1.5	1
milk	2	1		tomatoes	2.5	1
cheese	5	2		water (.5 L)	0.75	0.4
teabags	10	5		water (5 L)	2	1.25
sugar	3	1.8		shampoo	4	1
lemon juice	2	0.8		toothpaste	2	1
veg. oil	5	2		tomatoes	2.5	1

Attachment K – Kırklareli GOP: sediment from 2 L of boiled water
provided by detainees



sediment captured in paper coffee filter

Attachment L – Kırklareli GOP: forbidding carceral exterior
photos provided by detainees



all around chain-link fencing topped with barbed wire



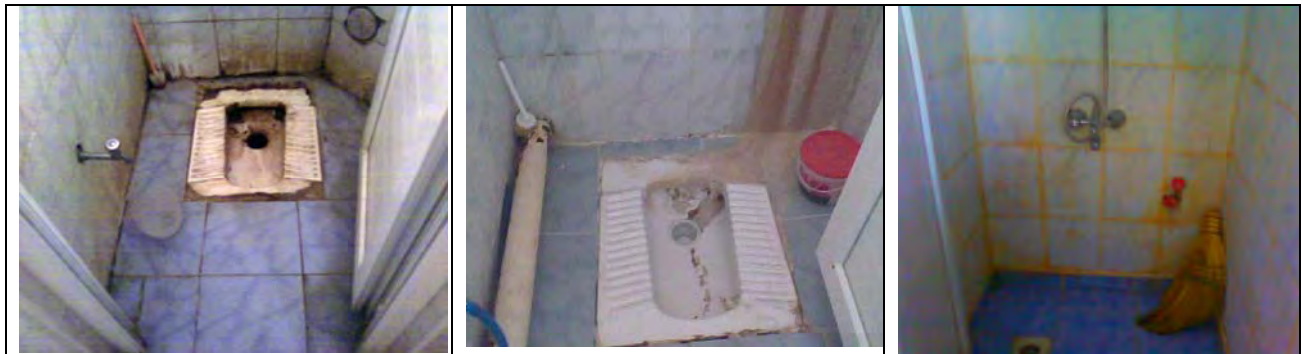
garbage dumpsters



outside view of men's block

patch of overgrown grass, volleyball net

Attachment M – Kırklareli GOP: Sanitary facilities & general state of cleanliness
photos provided by detainees



↑ toilets and shower in men's block



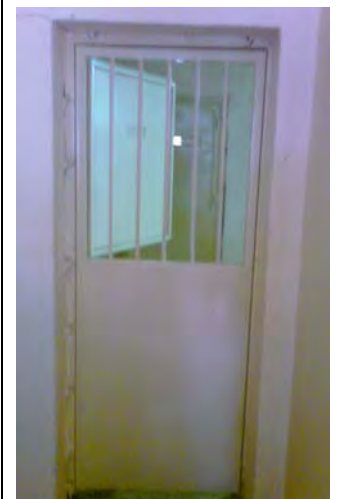
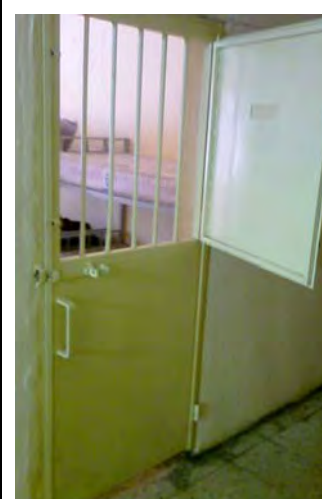
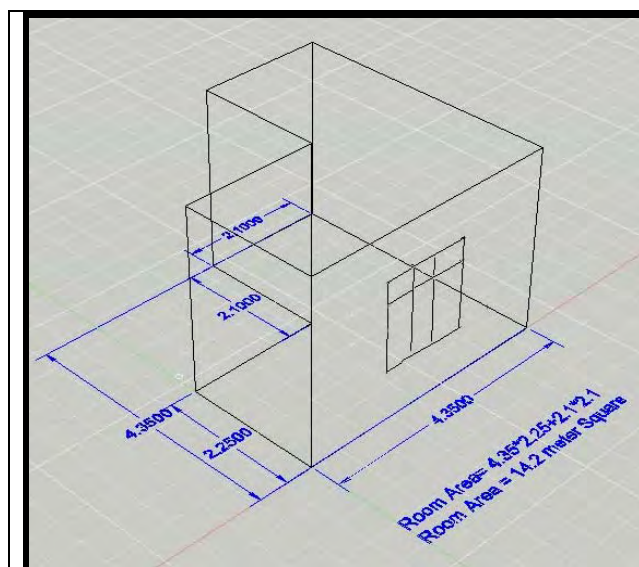
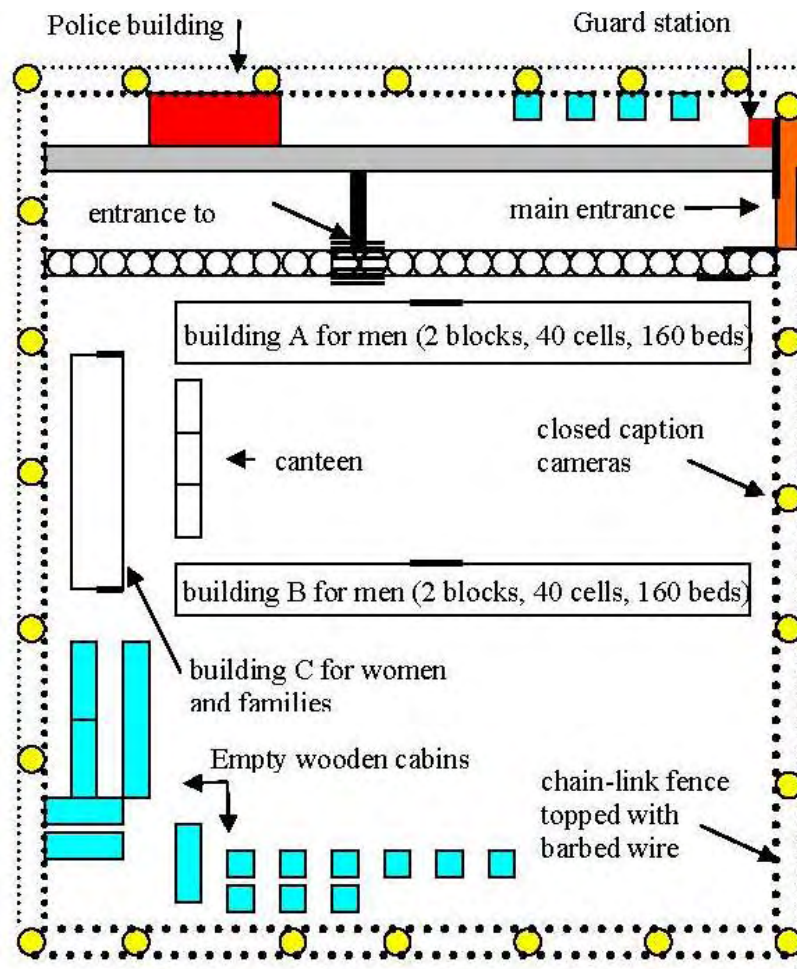
↑ unused dining area in men's block

↓ entrance & corridor of men's block



Attachment N – Kirklareli GOP: map and cells

photos provided by detainees



cell door from outside and inside